



- PCB
- PCBA & Box Building
- Plastic & Metal Parts and Enclosures
- LED Lighting

[www.acmecircuit.com](http://www.acmecircuit.com)

## *From the Founder...*

**A**s the founder of ACME group of companies, I am deeply proud of the journey we have undertaken together. What began as a vision to build innovative manufacturing solutions has flourished into a dynamic enterprise, driven by excellence, creativity, and teamwork.

Through our dedicated efforts, we have successfully established three thriving sister concerns specializing in PCB manufacturing, Electronic Manufacturing Services (EMS), and Lighting manufacturing. These divisions reflect our unwavering commitment to precision, quality, and technological advancement, enabling us to serve a diverse range of industries and touch countless lives.

Our success stems not only from the expertise and innovation we bring to the table but also from the trust and partnerships we have cultivated over the years. With a steadfast focus on sustainability and a passion for progress, we are poised to create meaningful solutions that illuminate the future.

I am honoured to lead a team that shares a collective vision for growth, integrity, and transformation. Together, we continue to redefine the boundaries of manufacturing excellence and build a legacy for generations to come.



*Sneh Pandya*

Co - Founder

## **Quick Index**

Strength of Acme Group	04
End-To-End Electronic Manufacturing	06
Printed Circuit Board	08
Printed Circuit Board Assembly	12
Turnkey Box Build / TLA	16
Plastic & Metal Enclosures	18
Arka LED Lighting	21

# ACME GROUP



## Strength of Acme Group

- Acme group has a team of highly experienced passionate technocrats.
- Acme Group has total facilities & capabilities of Designing, Engineering & Electronics Contract Manufacturing Services (ECMS)
- State-of-the-art manufacturing facilities.
- Uses technologically advanced equipment's from world's leading brands.
- Acme group believes in creating values by providing innovative and unparalleled services and solutions in the field of Electronic Manufacturing, Design & Engineering and Box Building
- Rapid Prototyping, New Product Introduction and Supply Chain Management.





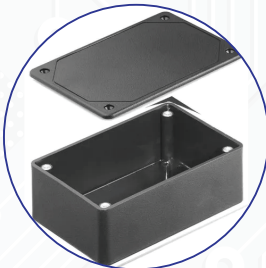
## **PCB**

Since 2005, our company has been a leading manufacturer, supplier and exporter of a specialized, high precision, high reliability, high density PCBs (Printed Circuit Boards). We are an ISO 9001:2015 certified company working with a commitment to adhere to the international standards in the designing and manufacturing of PCBs. we are one stop solution for all your requirements from PCB layout to PCB layout to PCB fabrication.



## **PCBA and Box Building**

Acme is a team of young passionate technocrats. Design, Engineering & Electronics Contract Manufacturing Services (ECMS) company having state-of-the-art manufacturing facility and technologically advanced equipments from world's leading brands. Acme believes in creating values by providing innovative and unparalleled services and solutions in the field of Electronic Manufacturing, Design & Engineering, Rapid Prototyping, New Product Introduction and Supply Chain Management.



## **Plastic & Metal Parts and Enclosures**

The group provides one stop solution for custom injection molded parts with expertise in mold development, injection molding process and post mold assembly operations. We specialize in providing engineering grade plastic parts to OEMs and end use product companies.

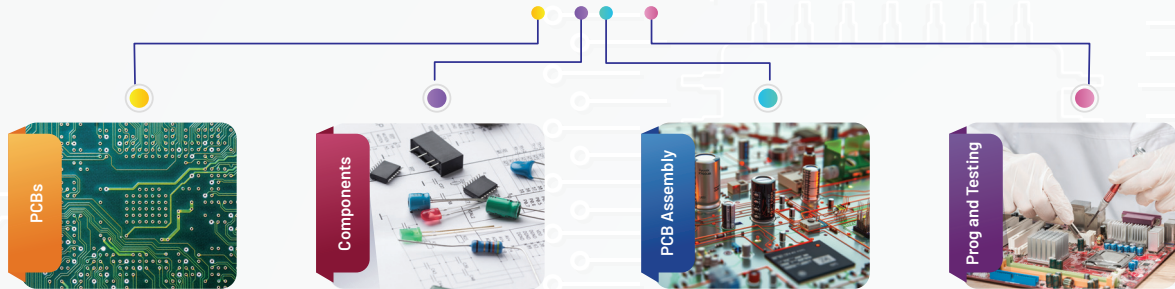


## **LED Lighting**

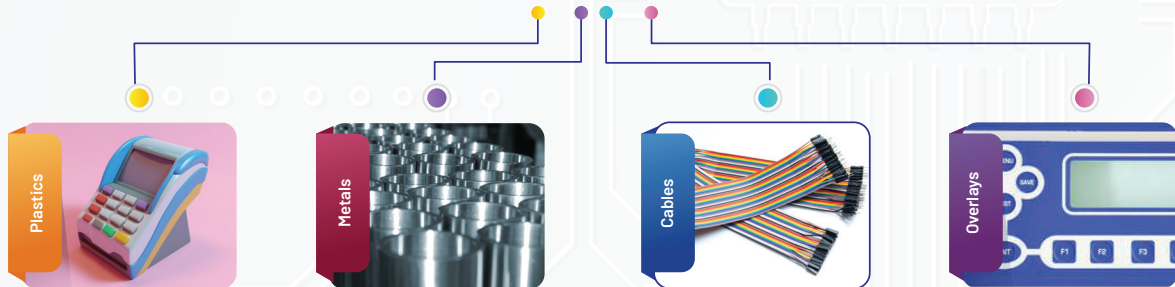
Arka was conceived with a visionary intent to reshape the future of illumination through precision, innovation, and reliability. Arka is an ISO 9001-2015 certified company built upon a robust legacy of excellence. This foundation has evolved into Arka a company dedicated to mastering the art and science of advanced lighting technologies.

# End-To-End Electronic Manufacturing

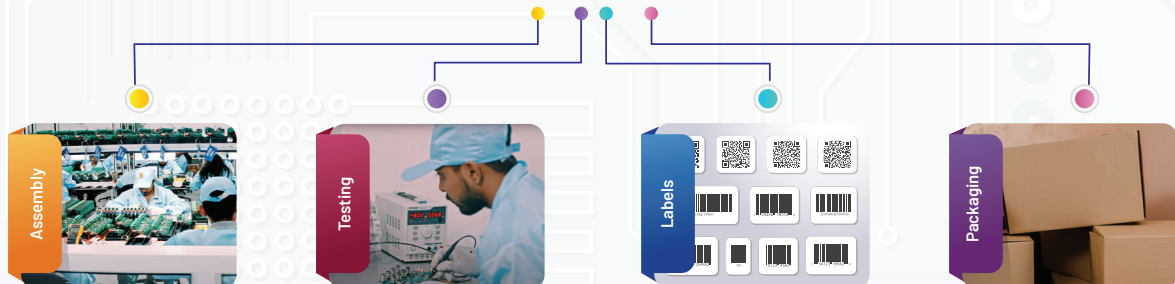
## PCB / PCBA



## Allied Parts



## Turnkey Box Building



## Green Manufacturing & Intellectual Property Protection



## Quality Systems & Memberships



## Industries we serve



Renewable Energy



Automobile



Industrial Electronic



Telecommunication



IoT



Railways



Aerospace



Defense



Pharmaceuticals



Consumer Electronic

# PCB

---

## Manufacturing Capacity

We offer prototypes and high-volume production in our Ahmedabad, Gujarat and Vadodara Gujarat facilities. Manufacturing includes single-sided, Metal core and multi-layer constructions using an array of base materials. Upon request, our global partners are an option based on lead times and pricing requirements.

Our 60,000 sq. ft., full-service PCB solution-provider at our headquarters in Ahmedabad is capable of manufacturing over 180, 000 sq. mtr. of panels per annum. Within this facility, our manufacturing processes are continuously upgraded with new equipment to allow us to stay current with the newest technologies.



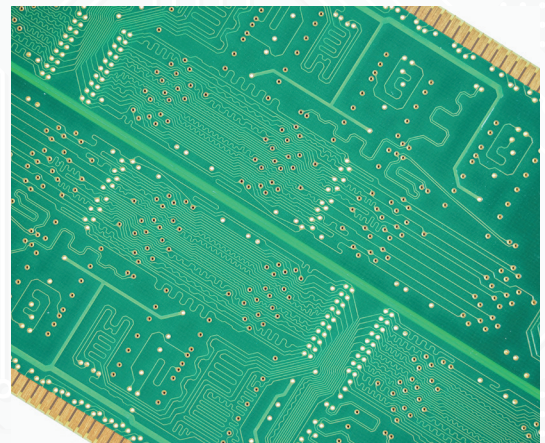
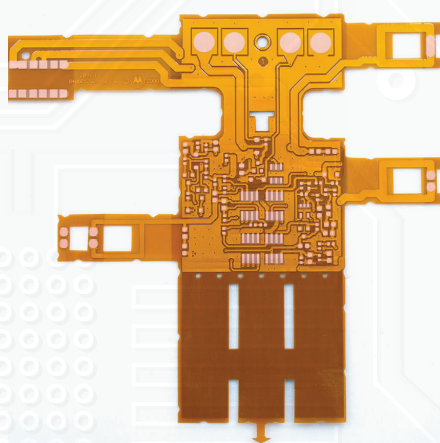
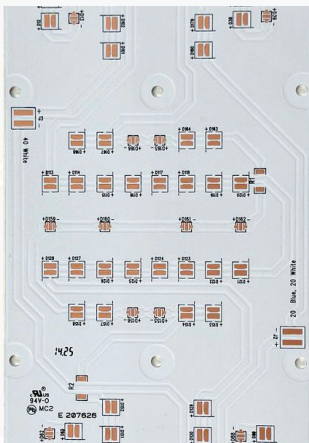
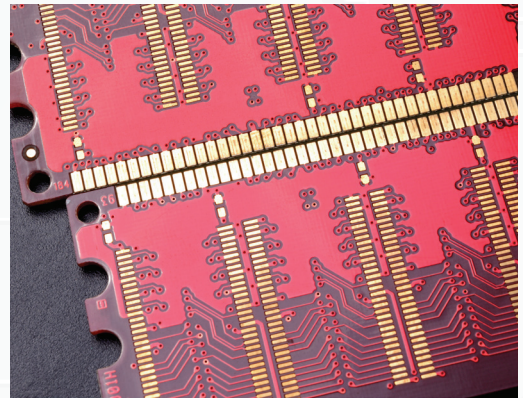
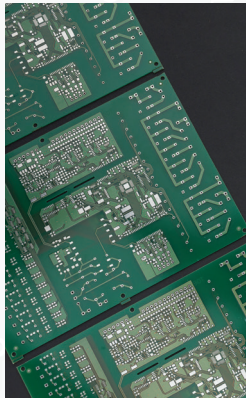
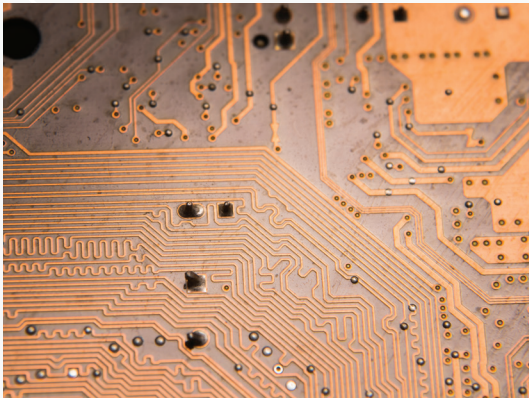
## PCB Capabilities

### Production Capabilities (Rigid, Flex and Rigid-Flex)

- Layers: 1-40
- Smallest Trace/Space:
  - 3/3 mils Smallest PadSize: 3 mils
- Min. Aspect Ratio: 12:1
- Board Thickness: 20-250 mils
- Minimum 0.4 mm BGA Pitch
- LOI Solder Mask Registration
- Plated Edges/Castellation's
- Multiple Plating
- Minimum Solder Mask Between Pads: 2.5 mils
- Min. Core Thickness: 2mils (without copper), 5 mils (with copper)
- Smallest DrillSize: 3 mils (Mechanical), 3 mils (Laser)
- Smallest Finished Hole Size: 2 mils (Mechanical), 2 mils (Laser)
- Vias: Blind, Buried, In Pad, Via fill
- Largest Panel Size:
  - 22" x 48" {Single-sided & MetalCore PCBs}
  - 22" x 48" {Double-sided PCBs}
  - 22" x 26" (Multi-Layer PCBs)
- Materials:
  - FR-4 (Low Tg, or High Tg, UL Approved)
  - Megtron 6
  - Polyimide
  - Rogers Ceramic & Duroid
  - Halogen-free
  - Taconic Nelco
  - Arion / Arion Flex
  - High Frequency
  - Panasonic
- Impedance Tolerance : 5%
- Impedance Control
- LOI Inner/Outer Layer Imaging
- High Copper Weight
- Via Fillconductive/non-conductive
- Control Depth Routing
- Metal Core:
  - Aluminium Core 6061
  - Aluminium Core 5052
  - Copper Core
  - Copper-Invar-Copper
- Hybrids:
  - Metal-Backed Rogers Duroid
  - Metal-Backed Robers Ceramics
  - Metal-Backed FR-4
- Surface Treatments:
  - HASL (lead or lead-free)
  - ENIG
  - Gold Plating
  - Immersion Thin
  - Immersion Silver
  - OSP

## PCB Capabilities

- **Solder Mask**  
Green, White, Orange, Blue Red,  
Black, Yellow, Customer Colors
  - **Technical Assistance**
  - **Rigid-Flex & Flex:**
- Sculpted Fingers
  - Impedance Control
  - Dynamic Flexing
  - Fine Lines
  - Cavity Boards
- Wire Bondable
  - Strip lines
  - Micro Strip Lines
  - Cryo-Stable (as low as -200C Liquid Nitrogen/Rigid-Flex)
  - Cryo-Stable(as low as -273C Liquid Nitrogen/Flex)





## Machinery for PCB Manufacturing



Roller Cutting Machine



Etching and Stripping Machine



Photoresist Coating Machine



CNC V Grooving Machine



UV LED Dry Film Exposure



Solder Mask Screen Printing



# PCB Assembly

We provide contract manufacturing with high-speed SMT and through-hole lines for both prototypes and large production orders across military, medical, automotive, industrial, and consumer sectors. Our in-house design and fabrication allow for prototype creation in as fast as 24 hours. We also offer functional testing, programming,

inspection, and rework.

Our quality system ensures that employees are IPC-A-610 and IPC-J-STD Class III qualified, and all SMT areas are ITAR-restricted to meet military standards. Additionally, we are ESO compliant with ANSI/ESD S20.20.



## State-Of-The-Art Facility

- Located in the heart of Industrial Corridor Area
- ESD Floors & Human ESD Control
- Centrally Air Conditioned Dust Free Environment
- Easy access to Airport, Seaport and Road Transportation across INDIA
- 200+ Skilled Engineers and Technicians

## 3 Advanced SMT Lines

- Fuji GPX CII: Paste Printer
- GKG G-TITAN: Paste Printer
- KOH YOUNG KY8080: 3D SPI
- FUJI AIMEX 3C: P & P
- JT RS800: Reflow Oven
- KIC PROFILER
- NORDSON: 3D AOI
- TRI: 2D AOI
- GLENBROOKE: X-Ray

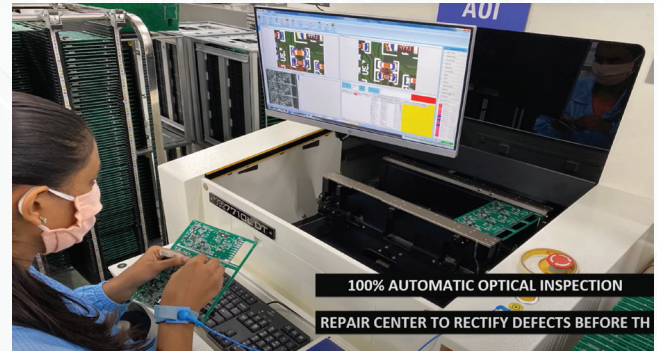
## Capabilities & Capacity

- SMT > 01005 to 102mm SMT Components Size
- SMT > Micro BGA/Large BGA, CSP, Flip-Chip, Fine Pitch, QFN & Modules/SOM
- PCB Size: 510mmx 400mm
- Flex & Rigid-Flex PCB Assembly
- Thru Hole Assmby
- No MOQ, Proto, High-Mix Low
- Volume or High Volume
- IC Programming, Board Programming & Board Level/System Level Testing
- Conformal Coating
- Epoxy Potting
- Cable/Wire/Flex Cable Soldering on the Board
- 5000-10000 PCBA per Day
- 500-3000 Products/Box-Build per Day



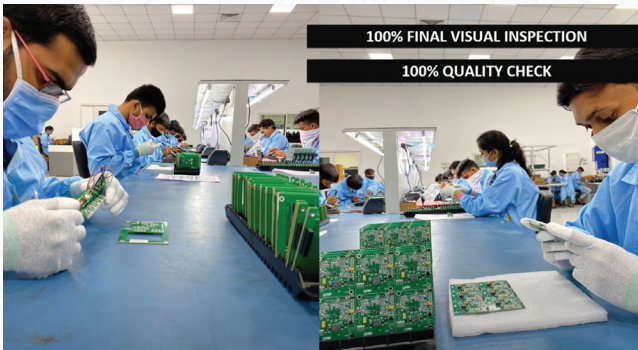
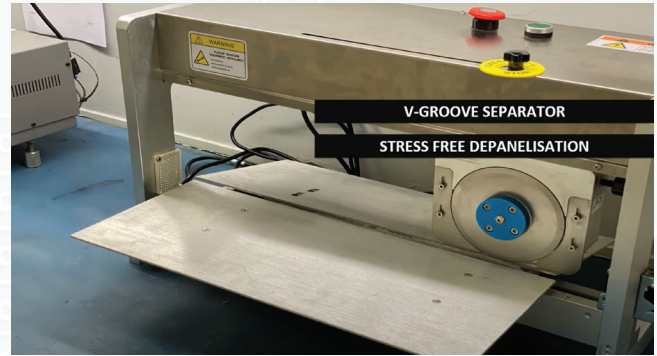


## Our Infrastructure



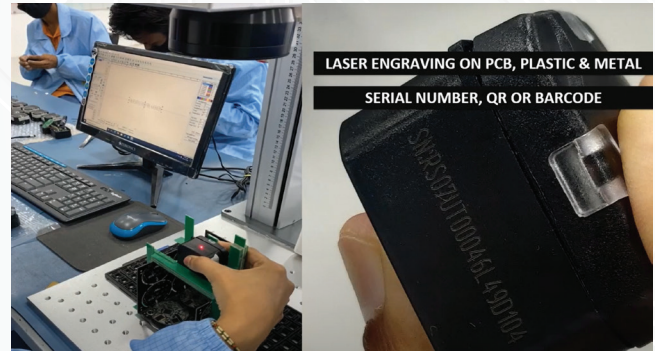
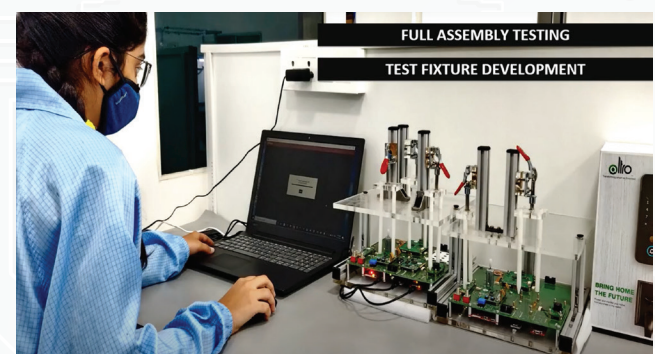
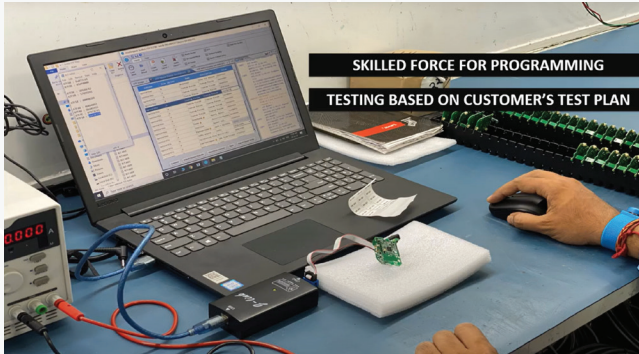


## Our Infrastructure



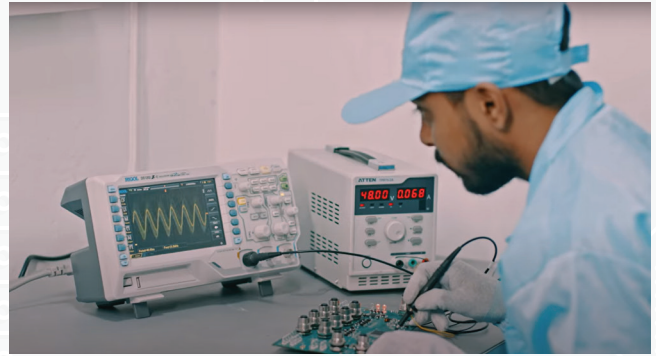


## Our Infrastructure





## Our Infrastructure



## Supporting Equipments and Jigs & Fixtures



AOI Machine



Aqua Washline Machine



Wave Soldering Machine



Epoxy Potting Machine



Laser Marking Machine



PCB Separation Machine

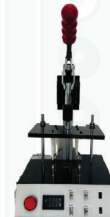
## Customise Testing Jigs & Fixtures



PCB Test Jigs 01



Vacuum Test Fixtures



PCB Test Jigs 02

## Cable Assembly & Wire Harness



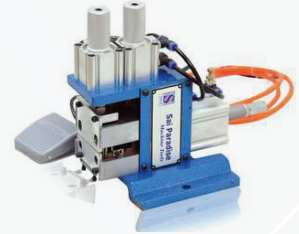
**Precision Crimping  
Machines**



**Sleeve Cutting Machines**



**Automatic Wire Stripping &  
Cutting Machines**



**Refers to IPC/WHMA-A-620**

## Overlays and Packaging

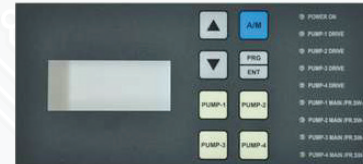
Partners with keypad overlay manufacturers and packaging designers & manufacturers



**Overlay PC Labels**



**Overlay PC Labels**



**Membrane Keypads**



**Membrane Keypads**



**Product Packaging**



# Turnkey Box Build / TLA

- 5 Advanced Box-Build /Top Level Assembly Lines
- Experienced and Skilled Assemblers Force
- Assembly lines equipped with PCs, Scanners, Printers & Marking Machines
- Equipped with IP Cameras to monitor production process remotely by customer.

## Assembly Line Equipements

### Printers and Scanners



Laser Marking  
Systems



Ultrasonic  
Plastic Welding  
Machine

## Box Built Products



## Plastic Molds & Components

- Plastic Injection Molds/ Tools
- BOX-BUILD/ TLA
- 25 Injections Molding Machines from 25 Tones to 650 Tones from leading brands like Feromatik Milacron, Engel, L&T and Arbourg with Automatic Robot pick up
- Can Process all kind of Engineering Plastics
- Pad Printing on Plastic Parts
- Plastic Parts sub-assemblies
- Over-Molding & Insert Molding



## Metal Parts & Enclosures

## Partners with fabricators and extruders locally

- Enclosure & Plates> Sheet Metal Fabrication
- Blanked and Turned Parts
- Aluminium Extrusion
- Pressure Die-Casting and Gravity Casting
- Hi-Tech Laser cutting and Bending machines
- Tools & Dies for Metal Cutting
- Powder Coating
- Anodizing Process





## Manufacturing Facilities



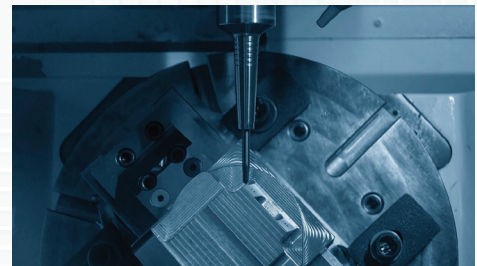
60-1050 Clamp Tonnage

31 Injection Molding Machines

ISO 8 Class 100,000 Clean Room

## Mould Development

- Acme has partnered with mould manufacturers in India, China & Taiwan.
- Acme Engineering team reviews and controls aspects of mould DFM, mould Flow Analysis & mould Design.
- Experts in critical moulds such as hot runners, split moulds with hydraulic and pneumatic core pulls.
- Mould Trial and Qualification process
- In-house tool room for mould repair/modification and preventive maintenance.



## Plastic Moulding Machinery

Machine make	Machine Tonnage	No. of Machine
YIZUMI	1050 Ton	1
Milacron	660 Ton	1
Milacron	450 Ton	1
Milacron	350 Ton	1
Milacron	250 Ton	2
YIZUMI	260 Ton	1
ARBURG	200 Ton	1
Milacron	200 Ton	1
YIZUMI	200 Ton	2
YIZUMI	160 Ton	5
Milacron	150 Ton	5
Milacron	125 Ton	3
YIZUMI	90 Ton	1
Milacron	80 Ton	1
L&T	60 Ton	2
TKC	55 Ton	3
	<b>Total</b>	<b>31</b>

## Lab Equipments

Description of Equipment	Nos.
VMM	1
HV Tester - 15 KVA	1
Height Gauge 300 mm	1
Varnier Calipers - 600 mm	1
Vernier Callipers - 200 mm	2
Thread Gauge 8 mm	1
Thread Gauge 14 mm	1
Weigh Balance - 3 Kgs	1
Weigh Balance - 10 Kgs	1
Weigh Balance - 20 Kgs	3
Weigh Balance - 100 Kgs	1
Weigh Balance - 200 Kgs	2
Vernier Callipers Inside - 150 mm	1





## The Art of Lighting

Arka was conceived with a visionary intent to reshape the future of illumination through precision, innovation, and reliability. As a member of the Acme Group of Companies, founded in 2005, Arka, ISO 9001-2015 certified company, is built upon a robust legacy of excellence. Over the years, Acme has earned a distinguished reputation as a pioneer in the remanufacturing of Printed Circuit Boards (PCBs) and specialized electronic manufacturing services. This foundation has evolved into Arka—a company dedicated to mastering the art and science of advanced lighting technologies.

## Legacy of Excellence

The group's esteemed clients include industry leaders like Philips, Syska, Crompton, Bajaj, and Panasonic. It has significantly advanced electronic infrastructure in the automotive, lighting, and EMS sectors.

## Vision & Mission

To be a global leader in intelligent, innovative lighting solutions that improve quality of life. To deliver reliable, sustainable lighting technologies through innovation and craftsmanship, meeting the diverse needs of our customers in domestic, automotive, and industrial sectors.



## Components/BOM Sourcing

Partners with all major global authorised distributors



## Certification / Membership



Confederation of Indian Industry



**FEDERATION OF INDIAN  
EXPORT ORGANISATIONS**

Set up by Ministry of Commerce, Government of India  
ISO 9001:2015 Certified



## Esteemed Customers

**ACME**  
GROUP



Probus



**KIRBY**



xylem



NIRA

TRACKONOMY



**K-LITE**





# Thank You



## Contact us



11/13, Subhash Industrial Estate, Nr. Swaminarayan Mandir,  
CTM Ramol Road, Ahmedabad – 380 026, Gujarat (India)



+91 9898011524  
+91 9974746869



info@acmecircuit.com  
ceo@acmecircuit.com



WhatsApp



Digital Catalogue