



- Electronic Designing
- PCB
- PCBA & Box Building
- Plastic & Metal Parts and Enclosures

www.acmecircuit.com

About Acme Circuit...

Mr Sneh Pandya is the visionary co-founder of Acme Circuit, an entrepreneur known for his bold outlook and ability to embrace challenges. His journey from PCB designing to advanced PCBA and complete box building solutions reflects his relentless drive for growth and innovation.

Under his leadership, Acme Circuit has established a world-class manufacturing facility producing UL–certified PCBs, setting benchmarks in quality and reliability. With a strong focus on global competitiveness, Mr Pandya has successfully developed export markets and built enduring relationships with international clientele, positioning Acme Circuit as a trusted partner across industries.

His entrepreneurial spirit, combined with technical expertise and strategic foresight, has transformed Acme Circuit into a brand synonymous with connectivity, precision, and excellence. By continuously expanding capabilities and nurturing global partnerships, Mr. Pandya ensures Acme Circuit remains at the forefront of electronics manufacturing.

From humble beginnings to international recognition, his story is one of vision, resilience, and leadership – an inspiration for those who believe in turning challenges into opportunities.



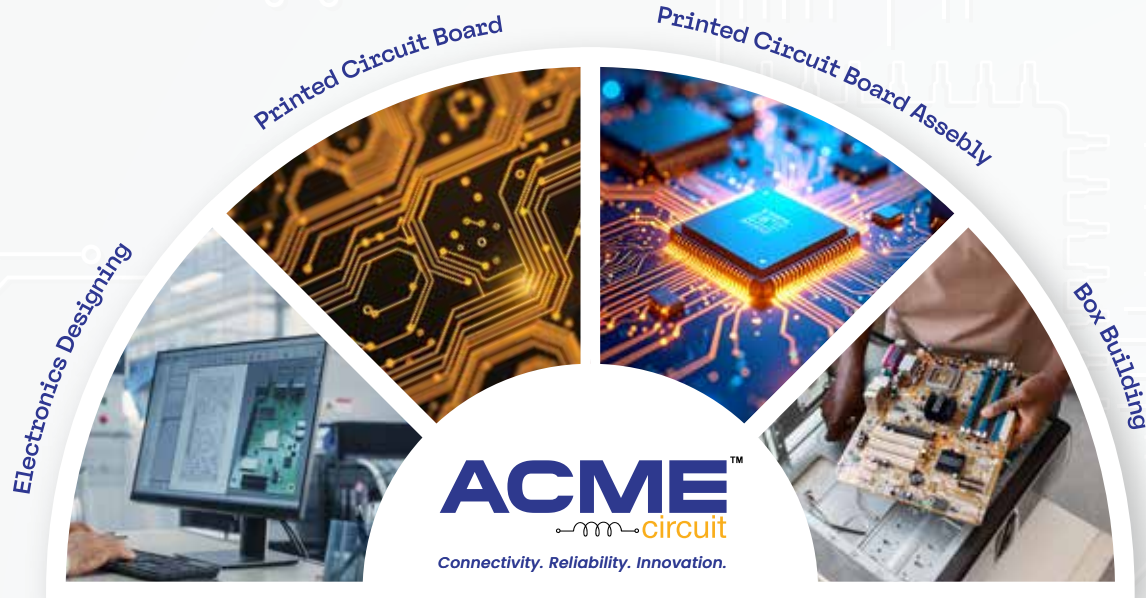
Sneh Pandya

Co - Founder

Quick Index

Strength of Acme Group	04
End-To-End Electronic Manufacturing	06
Design Engineering	08
Printed Circuit Board	10
Printed Circuit Board Assembly	14
Turnkey Box Build / TLA	22
Plastic & Metal Enclosures	24

Strength of Acme Group



- Acme group has a team of highly experienced passionate technocrats.
- Acme Group has total facilities & capabilities of Designing, Engineering & Electronics Contract Manufacturing Services (ECMS)
- State-of-the-art manufacturing facilities.
- Uses technologically advanced equipment's from world's leading brands.
- Acme group believes in creating values by providing innovative and unparalleled services and solutions in the field of Electronic Manufacturing, Design & Engineering and Box Building
- Rapid Prototyping, New Product Introduction and Supply Chain Management.



Design Engineering

Acme Circuit offers comprehensive electronic product design engineering, transforming concepts into market ready solutions. Our team integrates hardware, firmware, and mechanical design expertise to deliver optimized, reliable, and scalable products. From schematic development and PCB layout to prototyping and validation, we ensure compliance with global standards. Our design philosophy emphasizes innovation, manufacturability, and cost efficiency.



PCB

Since 2005, our company has been a leading manufacturer, supplier and exporter of a specialized, high precision, high reliability, high density PCBs (Printed Circuit Boards). We are an ISO 9001:2015 certified company working with a commitment to adhere to the international standards in the designing and manufacturing of PCBs. we are one stop solution for all your requirements from PCB layout to PCB layout to PCB fabrication.



PCBA and Box Building

Acme is a team of young passionate technocrats. Design, Engineering & Electronics Contract Manufacturing Services (ECMS) company having state-of-the-art manufacturing facility and technologically advanced equipments from world's leading brands. Acme believes in creating values by providing innovative and unparalleled services and solutions in the field of Electronic Manufacturing, Design & Engineering, Rapid Prototyping, New Product Introduction and Supply Chain Management.

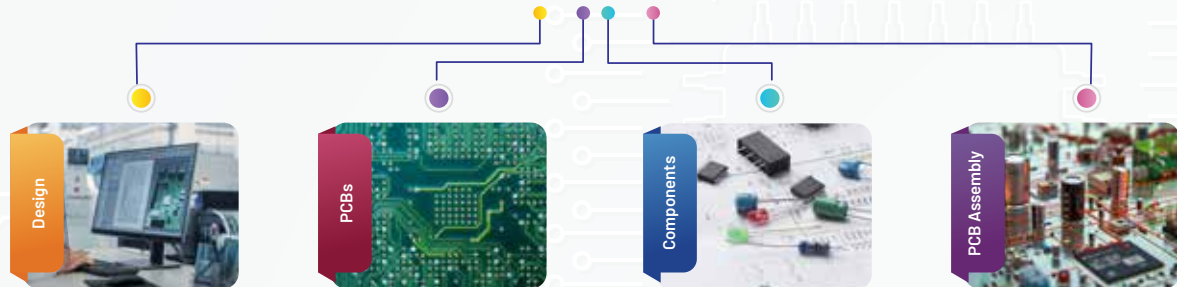


Plastic & Metal Parts and Enclosures

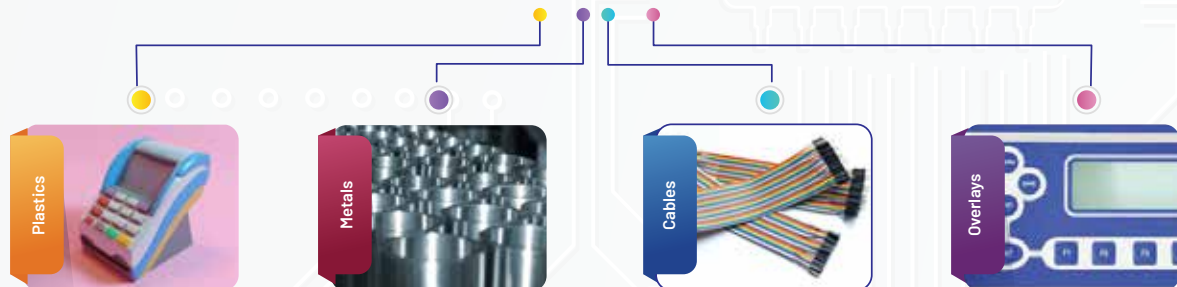
The group provides one stop solution for custom injection molded parts with expertise in mold development, injection molding process and post mold assembly operations. We specialize in providing engineering grade plastic parts to OEMs and end use product companies.

End-To-End Electronic Manufacturing

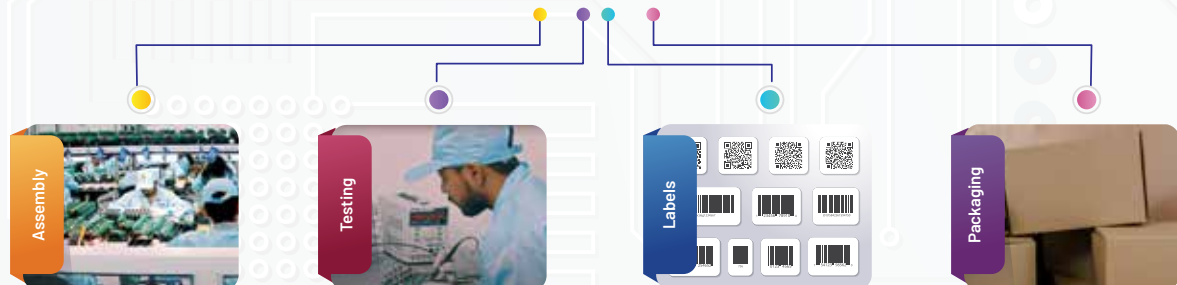
PCB / PCBA



Allied Parts



Turnkey Box Building



Green Manufacturing & Intellectual Property Protection



Industries we serve



Renewable Energy



Automobile



Industrial Electronic



Telecommunication



Railways



IoT / IT



Medical



Consumer Electronic

Quality Systems & Memberships



Design Engineering

Acme's End-to-End Electronics Design Solutions



Acme's End-to-End Electronics Design Solutions

- **Concept to Product:** Transforming ideas into market ready electronic solutions through end to end design services.
- **Hardware Expertise:** Schematic dev., PCB layout, & component selection optimized for performance and reliability.
- **Firmware & Software Integration:** Embedded systems design ensuring seamless functionality and scalability.
- **Mechanical Design:** Enclosures and product ergonomics aligned with manufacturability and user experience.
- **Prototyping & Validation:** Rapid prototyping, functional testing, and compliance verification against global standards.
- **Simulation & Analysis:** Advanced tools for thermal, signal integrity, and reliability modeling to minimize risk.
- **Cross disciplinary Collaboration:** Coordinated engineering across electronics, mechanical, and software domains.
- **Compliance & Certification:** Adherence to international safety, EMC, and regulatory requirements.
- **Innovation Focus:** Designs tailored for cost efficiency, manufacturability, and future proof technology adoption.
- **OEM/ODM Partnership:** Trusted support for clients seeking competitive, scalable, and sustainable electronic products.
- **RFQ Management:** Fast track handling of pilot production requests with precision and speed.
- **BoM Expertise:** Comprehensive analysis, smart part selection, and proactive obsolescence management.
- **Custom Test Systems:** Development of tailored testing solutions to ensure product reliability.
- **Strategic Cost Optimization:** Reduction through alternate vendor sourcing and supply chain innovation.
- **Material Selection Mastery:** Choosing the right components and materials for performance and compliance.
- **AVL Reliability:** Streamlined Approved Vendor List management for consistent quality.
- **Product Transformation:** Complete revamping with the introduction of cutting edge technologies.
- **Design Innovation:** Metal to plastic enclosure conversions for enhanced aesthetics and cost efficiency.

PCB

Manufacturing Capacity

We offer prototypes and high-volume production in our Ahmedabad, Gujarat and Vadodara Gujarat facilities. Manufacturing includes single-sided, Metal core and multi-layer constructions using an array of base materials. Upon request, our global partners are an option based on lead times and pricing requirements.

Our 60,000 sq. ft., full-service PCB solution-provider at our headquarters in Ahmedabad is capable of manufacturing over 180, 000 sq. mtr. of panels per annum. Within this facility, our manufacturing processes are continuously upgraded with new equipment to allow us to stay current with the newest technologies.

PCB Capabilities

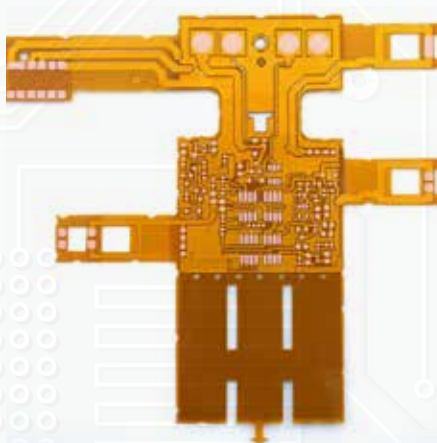
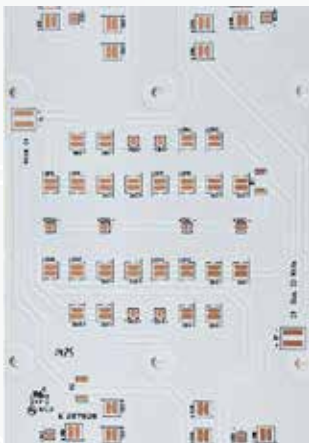
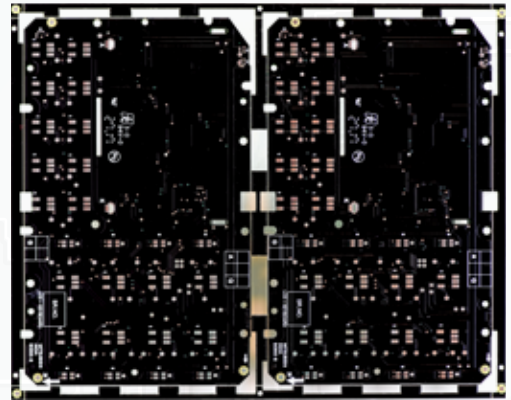
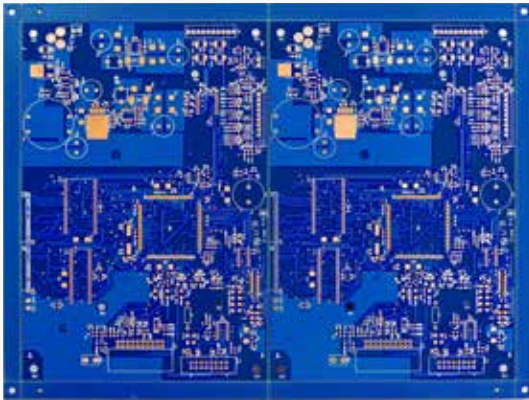
Production Capabilities (Rigid, Flex and Rigid-Flex)

FR4, CEM1, CEM3, High Tg material, PTFE, Metal Cladded & Multi Layers upto 40

- Layers: 1-40
- Smallest Trace/Space:
 - 3/3 mils Smallest PadSize: 3 mils
- Min. Aspect Ratio: 12:1
- Board Thickness: 20-250 mils
- Minimum 0.4 mm BGA Pitch
- LOI Solder Mask Registration
- Plated Edges/Castellation's
- Multiple Plating
- Minimum Solder Mask Between Pads: 2.5 mils
- Min. Core Thickness: 2mils (without copper), 5 mils (with copper)
- Smallest DrillSize: 3 mils (Mechanical), 3 mils (Laser)
- Smallest Finished Hole Size: 2 mils (Mechanical), 2 mils (Laser)
- Vias: Blind, Buried, In Pad, Via fill
- Largest Panel Size:
 - 22" x 48" {Single-sided & MetalCore PCBs}
 - 22" x 48" {Double-sided PCBs}
 - 22" x 26" (Multi-Layer PCBs)
- Materials:
 - FR-4 (Low Tg, or High Tg, UL Approved)
 - Megtron 6
 - Polyimide
 - Rogers Ceramic & Duroid
 - Halogen-free
 - Taconic Nelco
 - Arion / Arion Flex
 - High Frequency
 - Panasonic
- Impedance Tolerance : 5%
- Impedance Control
- LOI Inner/Outer Layer Imaging
- High Copper Weight
- Via Fillconductive/non-conductive
- Control Depth Routing
- Metal Core:
 - Aluminium Core 6061
 - Aluminium Core 5052
 - Copper Core
 - Copper-Invar-Copper
- Hybrids:
 - Metal-Backed Rogers Duroid
 - Metal-Backed Robers Ceramics
 - Metal-Backed FR-4
- Surface Treatments:
 - HASL (lead or lead-free)
 - ENIG
 - Gold Plating
 - Immersion Thin
 - Immersion Silver
 - OSP

PCB Capabilities

- **Solder Mask**
Green, White, Orange, Blue Red,
Black, Yellow, Customer Colors
 - **Technical Assistance**
 - **Rigid-Flex & Flex:**
- | | |
|-------------------|--|
| Sculpted Fingers | Wire Bondable |
| Impedance Control | Strip lines |
| Dynamic Flexing | Micro Strip Lines |
| Fine Lines | Cryo-Stable (as low as -200C Liquid Nitrogen / Rigid-Flex) |
| Cavity Boards | Cryo-Stable(as low as -273C Liquid Nitrogen / Flex) |



Machinery for PCB Manufacturing



Class 100K Clean Room



Etching and Stripping Machine



Photoresist Coating Machine



CNC V Grooving Machine



UV LED Dry Film Exposure



Solder Mask Screen Printing



PCB Assembly



We provide contract manufacturing with high-speed SMT and through-hole lines for both prototypes and large production orders across military, medical, automotive, industrial, and consumer sectors. Our in-house design and fabrication allow for prototype creation in as fast as 24 hours. We also offer functional testing, programming,

inspection, and rework.

Our quality system ensures that employees are IPC-A-610 and IPC-J-STD Class III qualified, and all SMT areas are ITAR-restricted to meet military standards. Additionally, we are ESO compliant with ANSI/ESD S20.20.



State-Of-The-Art Facility

- Located in the heart of Industrial Corridor Area
- ESD Floors & Human ESD Control
- Centrally Air Conditioned Dust Free Environment
- Easy access to Airport, Seaport and Road Transportation across INDIA
- 200+ Skilled Engineers and Technicians

3 Advanced SMT Lines

- FUJI GPX CII: Paste Printer
- GKG G-TITAN: Paste Printer
- KOH YOUNG KY8080: 3D SPI
- FUJI AIMEX 3C: P & P
- JT RS800: Reflow Oven
- KIC PROFILER
- NORDSON: 3D AOI
- TRI: 2D AOI
- GLENBROOKE: X-Ray

Capabilities & Capacity

- SMT > 01005 to 102mm SMT Components Size
- SMT > Micro BGA/Large BGA, CSP, Flip-Chip, Fine Pitch, QFN & Modules/SOM
- PCB Size: 510mmx 400mm
- Flex & Rigid-Flex PCB Assembly
- Thru Hole Assmby
- No MOQ, Proto, High-Mix Low
- Volume or High Volume
- IC Programming, Board Programming & Board Level/System Level Testing
- Conformal Coating
- Epoxy Potting
- Cable/Wire/Flex Cable Soldering on the Board
- 5000-10000 PCBA per Day
- 500-3000 Products/Box-Build per Day



Our Infrastructure



Our Infrastructure



Our Infrastructure



Our Infrastructure



Supporting Equipments and Jigs & Fixtures



AOI Machine



Aqua Washline Machine



Wave Soldering Machine



Epoxy Potting Machine



Laser Marking Machine



PCB Separation Machine

Customise Testing Jigs & Fixtures



PCB Test Jigs 01



Vacuum Test Fixtures



PCB Test Jigs 02

Cable Assembly & Wire Harness



Precision Crimping
Machines



Sleeve Cutting Machines



Automatic Wire Stripping &
Cutting Machines



Refers to IPC/WHMA-A-620

Overlays and Packaging

Partners with keypad overlay manufacturers and packaging designers & manufacturers



Overlay PC Labels



Overlay PC Labels



Membrane Keypads



Membrane Keypads



Product Packaging

Turnkey Box Build / TLA

- 5 Advanced Box-Build /Top Level Assembly Lines
- Experienced and Skilled Assemblers Force
- Assembly lines equipped with PCs, Scanners, Printers & Marking Machines
- Equipped with IP Cameras to monitor production process remotely by customer.

Assembly Line Equipements

Printers and Scanners



Box Built Products



Plastic Molds & Components

- Plastic Injection Molds/ Tools
- BOX-BUILD/ TLA
- 25 Injections Molding Machines from 25 Tones to 650 Tones from leading brands like Feromatik Milacron, Engel, L&T and Arbourg with Automatic Robot pick up
- Can Process all kind of Engineering Platics
- Pad Printing on Plastic Parts
- Plastic Parts sub-assemblies
- Over-Molding & Insert Molding



Metal Parts & Enclosures

Partners with fabricators and extruders locally

- Enclosure & Plates> Sheet Metal Fabrication
- Blanked and Turned Parts
- Aluminium Extrusion
- Pressure Die-Casting and Gravity Casting
- Hi-Tech Laser cutting and Bending machines
- Tools & Dies for Metal Cutting
- Powder Coating
- Anodizing Process



Manufacturing Facilities



60-1050 Clamp Tonnage



31 Injection Molding Machines

ISO 8 Class 100,000 Clean Room

Mould Development

- Acme has partnered with mould manufacturers in India, China & Taiwan.
- Acme Engineering team reviews and controls aspects of mould DFM, mould Flow Analysis & mould Design.
- Experts in critical moulds such as hot runners, split moulds with hydraulic and pneumatic core pulls.
- Mould Trial and Qualification process
- In-house tool room for mould repair/modification and preventive maintenance.



Moulding Machinery

- From 55 Ton to 1050 Ton machines are available.
- YIZUMI, Milacron, ARBURG, L&T and TKC

Components/BOM Sourcing

Partners with all major global authorised distributors



Certification / Membership



**FEDERATION OF INDIAN
EXPORT ORGANISATIONS**

Set up by Ministry of Commerce, Government of India
ISO 9001:2015 Certified

Esteemed Customers

ACME
GROUP



NIRA

TRACKONOMY

flex



KIRBY

Biosense
health • technology • people

Vision
Metering

xylem

Seametrics

TycheTools

ecm | PCB
STATOR
TECH

TEKSUN
CULTIVATING TECHNOLOGY

Probus

Dantherm
CLIMATE SOLUTIONS

Lucy Electric

NETAFIM

BRENTWOOD

AMFAS
INTERNATIONAL

IDEX

Gala
FREUDENBERG



BUCHI

Hettich

SR STANDARD
RADIATORS



MATRIX
TELECOM | SECURITY

HANNING
moving ideas

TECHNOLOGY
INTERNATIONAL
ISO 9001:2015 Certified

MAXXIS



elmex
since 1963

OIZOM
REDEFINING RESOURCES

K-LITE



Thank You



Contact us



11/13, Subhash Industrial Estate, Nr. Swaminarayan Mandir,
CTM Ramol Road, Ahmedabad – 380 026, Gujarat (India)



+91 9898011524
+91 9974746869



ceo@acmecircuit.com
cbd@acmecircuit.com



WhatsApp



Digital Catalogue