

Turnkey Box Build

- 5 Advanced Box-Build /Top Level Assembly Lines
- Experienced and Skilled Assemblers Force
- Assembly lines equipped with PCs, Scanners, Printers & Marking Machines
- Equipped with IP Cameras to monitor production process remotely by customer.



Cable Assembly & Wire Harness



Esteemed Customers



ACME™
circuit
Connectivity • Reliability • Innovation



Scan for Website



Scan for Digital Catalogue

- 📍 **Acme Circuit**
11/13, Subhash Industrial Estate, Nr. Swaminarayan Mandir,
CTM Ramol Road, Ahmedabad – 380 026, Gujarat (India)
- 📞 Sneh Pandya - +91 9898011524 ✉️ ceo@acmecircuit.com
- 📞 Atul Lotia - +91 98200 87795 ✉️ cbd@acmecircuit.com
- 🌐 www.acmecircuit.com



Cat-03/2026

ACME™
circuit
Connectivity • Reliability • Innovation

- Design - Rapid Prototype
- Printed Circuit Board
- Printed Circuit Board Assembly
- Box Building
- Plastic & Metal Enclosures

Electronics Designing

Original Design Manufacturer



New Product Development

- Hardware Platform & Schematic Design
- Embedded Software Development
- Signal Integrity & Measurements
- Design as per Regulatory Compliance, Testing and Certification
- Tooling Vendor Selection, Qualification & Tool Development

Rapid Prototyping

- End-to-end design and prototyping.
- Custom solutions tailored to client requirements



Printed Circuit Board

Core Competencies

- Experience: 20+ Years of Excellence (Est. 2005)
- Compliance: Fully UL Certified for safety and quality assurance.

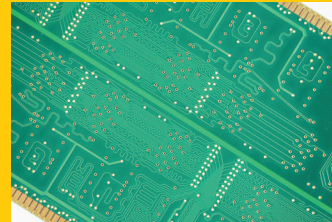
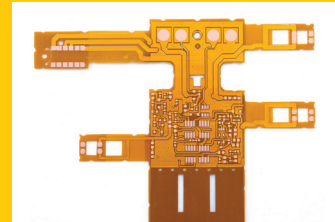
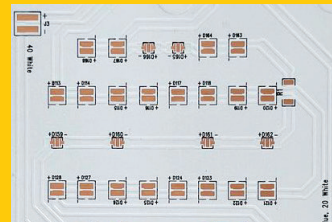
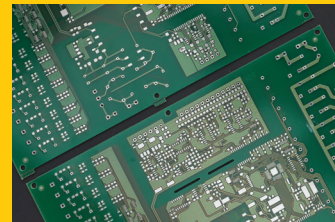
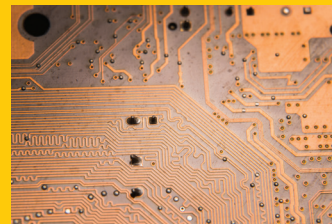
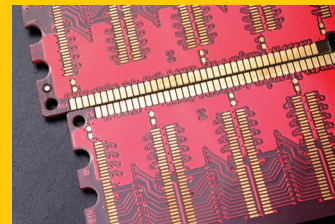
Technical Capabilities

Our facility is equipped with the latest automated machinery to handle complex board designs:

- Product Range: Single-Sided, Double-Sided, and Multi-Layer (upto 40 layers).
- Monthly Capacity: 40,000 Sq. Mtr.
- Technology: High-density interconnects and precision etching.

Infrastructure & Human Capital

- Facility Area: 10,000+ Sq. Mtr.
- Workforce: A robust team of skilled workers managed by a core group of expert Electronics & Process Engineers.



Printed Circuit Board Assembly

State-Of-The-Art Facility

- Located in the heart of Industrial Corridor Area
- ESD Floors & Human ESD Control
- Centrally Air Conditioned Dust Free Environment
- Easy access to Airport, Seaport and Road
- Transportation across INDIA
- 200+ Skilled Engineers and Technicians

Advanced SMT Lines

- Panasonic: Paste Printer
- KOH YOUNG KY8080: 3D SPI
- NORDSON: 3D AOI
- GLENBROOKE: X-Ray

